

FOR LEASE—3,366 SF

980 South Main Street

Cheshire, CT (Former Arby's)



Modern Building with Drive-Thru

High Traffic Area

40 Car Parking

Traffic Count: 22,200 VPD on South Main Street

Demographics	1 Mile	3 Miles	5 Miles	7 Miles
Population	4,146	26,288	78,145	192,506
Households	1,5679	9,702	28,338	73,909
Avg. HH Income	\$109,938	\$125,072	\$105,763	\$87,065
Daytime Pop.	2,635	15,617	56,083	141,599



615 West Johnson Ave., Suite 202, Cheshire, CT 06410

Bob Bowden 203-982-0158

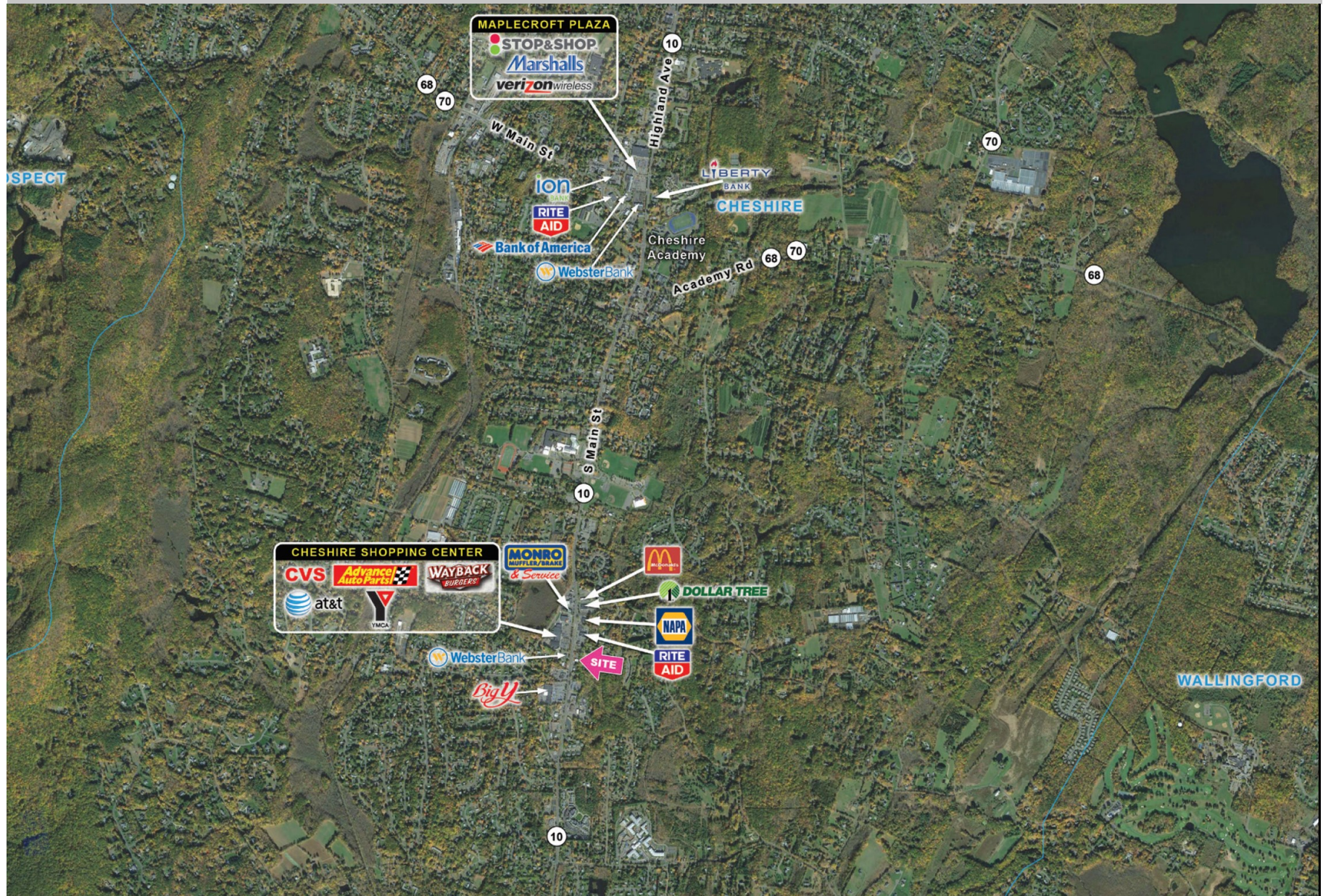
R. CALABRESE AGENCY, L.L.C.

www.CalabreseAgency.com

203-573-0342

Information provided is purported to be from reliable sources. No representation is made as to the accuracy thereof and it is submitted subject to errors, omissions, changes in price, rental or other conditions, prior sale or withdrawal notice. It is suggested that prospective buyers/tenants should carefully verify each item and exercise due diligence.

980 South Main Street, Cheshire, CT



980 South Main Street, Cheshire, CT

